

ACQUIRE | EXPLORE | DEVELOP



LINCOLN
MINING CORPORATION

**PROJECT
PORTFOLIO**

JUNE 2010



TSX-V: LMG

NEAR TERM GOLD PRODUCER

GOLD-SILVER EXPLORATION & DEVELOPMENT IN NORTH AMERICA

WWW.LINCOLNMINING.COM

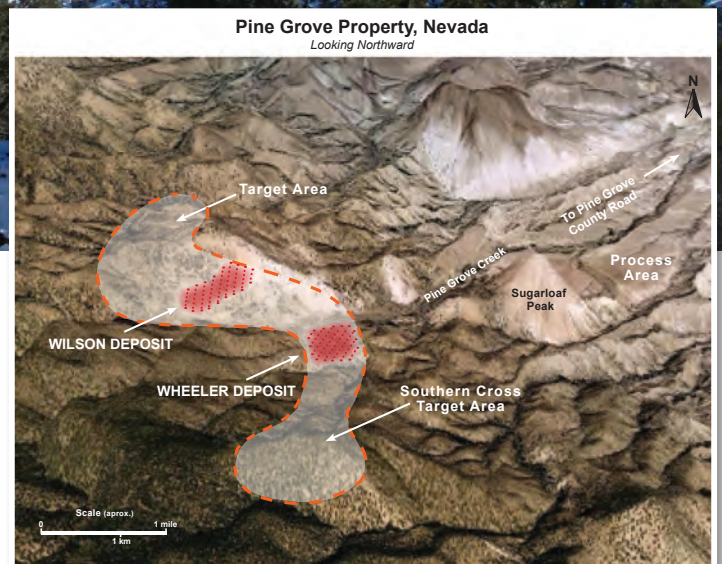
PINE GROVE

Gold Property

Production Target 2011

The Pine Grove Property is an advanced-stage gold project with near-term potential for gold production. The property is located in the Pine Grove Hills, Lyon County, approximately 20 miles south of the mining and farming town of Yerington in west-central Nevada. The Pine Grove mining district falls within the Walker Lane Mineral Trend, a historic gold belt well known for its high-grade gold mines. Historical underground mining on the property produced approximately 240,000 oz of gold from high-grade quartz veins hosted in sheared and altered granitic rocks to depths of 140 feet.

Significant gold mineralization is present on two patented mining claims as defined by 190 holes drilled by Teck Resources in the early 1990's and 67 holes drilled by Lincoln in 2008, 2009 and 2010. The Pine Grove district is dominated by Jurassic granodiorite and its variations. The style of mineralization is of the "Shear Zone" sub-type of Plutonic-Related Gold Quartz Veins and Veinlets. The mineralized zone occurs in a 600-ft wide fault zone that extends for over one mile. Lincoln



Top – View of the Wheeler deposit from the Wilson deposit.
Above – Google view of target areas at the Pine Grove Property.

Mining controls the entire Pine Grove mining district, covering approximately 7 square miles, including the important Wilson and Wheeler patented claims.

Present Resources

In January 2009, Lincoln filed an updated NI 43-101 technical report prepared in late 2008 by Minefill Sevices, Inc. that reported an Inferred resource from the Wilson and Wheeler mines of over 6 million short tons grading 0.053 opt gold using a cutoff grade of 0.01 opt gold with assays capped at 0.5 opt gold. The Inferred resource contains 320,000 oz gold and is well suited to open-pit mining and heap leach processing.

In December 2009, Lincoln initiated an infill and confirmation drill program on the Wilson and Wheeler patented claims, consisting of 63 shallow reverse-

circulation drill holes totalling 16,341 feet. The goal of this program was to reaffirm, expand and upgrade the resource category.

Project Scope & Plans

A scoping study (Preliminary Economic Assessment), metallurgical studies, including column leach tests, are presently underway. Step-out drilling is planned for the summer and fall of 2010. Additional metallurgical drilling and geotechnical drilling are also planned.

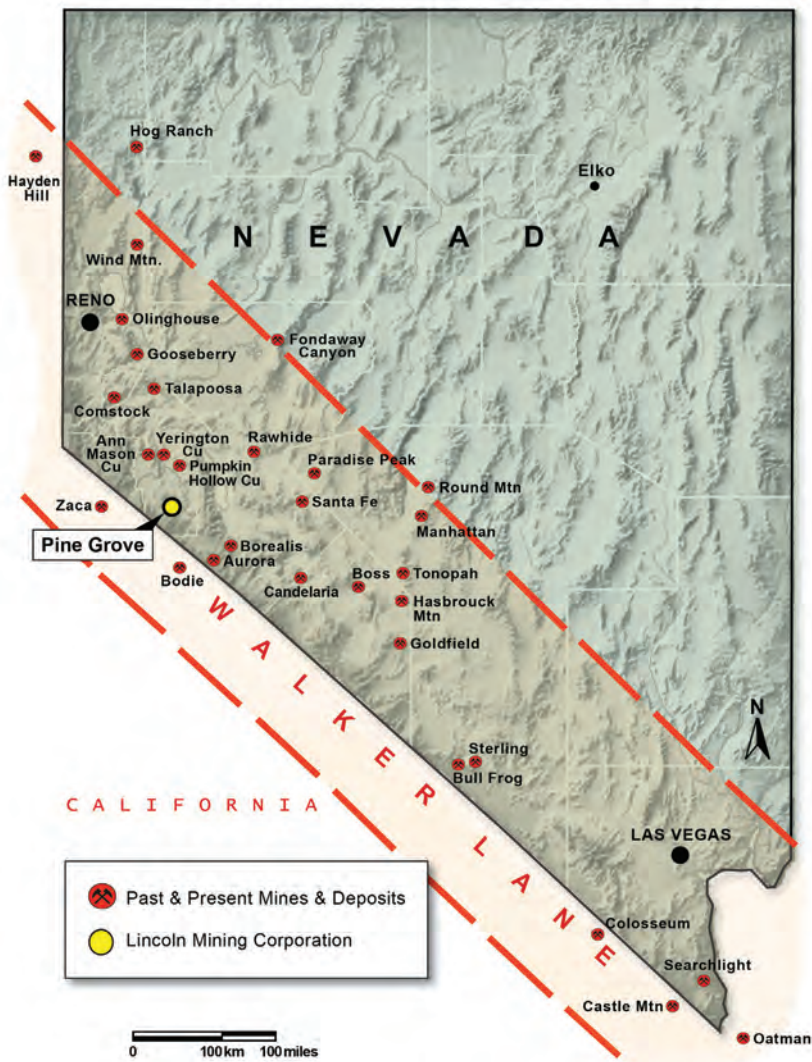
Lincoln's objective is to put the Pine Grove district back into production with open-pit mining and heap leach processing in 2011.

A detailed description of the Pine Grove Gold Property and the NI 43-101 technical report are available on the Company's website.



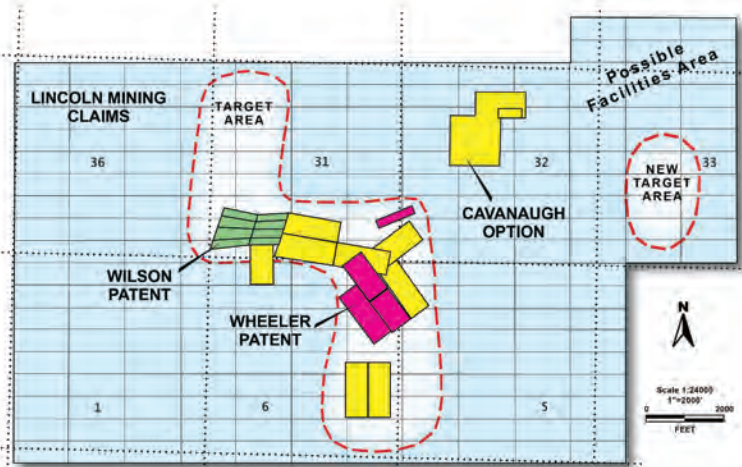
Drilling on the Wilson deposit in January 2010.

Walker Lane Mineral Trend



PROJECT HIGHLIGHTS

- Advanced-stage gold project, located on historic Walker Lane Mineral Trend
- Drilling will continue in 2010
- Exploration potential to extend mineralized zones
- Current NI 43-101 technical report estimates an Inferred resource containing 320,000 oz gold
- Revised resource estimate currently in progress
- Scoping Study & Feasibility Study planned for 2010
- Production target 2012



Pine Grove Property patented & unpatented claims block.

ORO CRUZ

Gold Property

Near-Term Production Potential



Top — Oro Cruz Pit
Above — Oro Cruz Portal

The Oro Cruz Property is located in the historic Tumco mining district in the Cargo Muchacho Mountains, southeastern California. The district is approximately 14 miles southeast of the operating Mesquite gold mine (New Gold Inc.) and is adjacent to the American Girl gold mine (past producer, 428,000 oz gold). The property consists of 88 unpatented lode claims comprising approximately 1,800 acres.

The Tumco district was first discovered by the Spaniards and mined as early as 1780-81. Organized mining at Oro Cruz (Golden Cross) occurred sporadically during the 1880's-1916 and 1932-1941. MK Gold Company produced 61,000 ozs of gold in a twelve month period from 1995-96. MK production was from open-pit and underground mining, which ceased when gold prices fell below \$275 oz. MK Gold was in the process of a pit wall push back to access additional ore in the pit. Gold mineralization remains in place and is presently exposed in the open-pit and in underground workings.

Local geology consists largely of Jurassic schist and gneiss of the Tumco Formation. Conspicuous Tertiary pegmatite dikes and latite dikes cut the metamorphic terrain. The style of mineralization is uncertain and may be of exhalite origin or mesothermal origin with structural control.

The main Oro Cruz gold deposit is an irregular, elongated, tabular zone that dips approximately 25°

downward from the open-pit floor for at least 1,650 ft. Mineralized thicknesses are variable at multiple tens of feet. Lesser parallel zones of mineralization are present. The deposit remains open down dip with one vertical hole containing 60 ft grading 0.4 oz gold per ton (not true thickness).

Present Resources

In 1999, prior to Canadian securities compliance requirements, "historical" gold resources were estimated by Mine Development Associates of Reno, Nevada at 3,365,298 tons grading 0.058 opt gold containing approximately 196,000 ozs gold in the Indicated category using a 0.01 opt gold cutoff grade.

In addition, 2,683,552 tons of Inferred resources were estimated with no grade assignment. These additional resources will be evaluated and included as part of future exploration projects on the project.

Project Scope & Plans

Lincoln Mining plans to advance the Oro Cruz Property to production. A NI 43-101 technical report is in progress and completion is expected by summer 2010. Technical work will follow soon thereafter to include confirmation drilling, metallurgy, base-line studies and early-stage mine permitting.

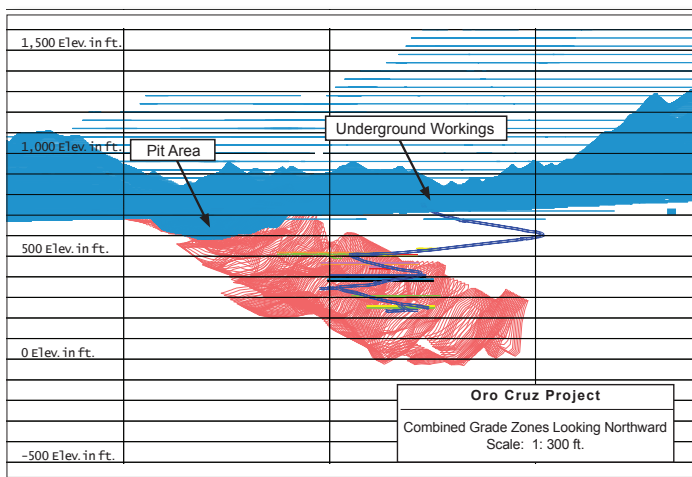


Above – The Mojave-Sonora mineral trend crosses California and Arizona into northern Mexico. The trend has a history of open pit gold mines.

Left – Enlargement of southeastern California shows the location of the Oro Cruz deposit, historical mines and the operating Mesquite open pit gold mine.

PROJECT HIGHLIGHTS

- **Advanced-stage gold project, located in one of California's historic and top mineral regions**
- **Substantial underground and open-pit development already completed, including a 2,000 ft decline and ventilation shafts**
- **Multiple exploration targets are present**
- **Potential for a near-term open-pit and underground mine**
- **NI 43-101 technical report currently in progress by Tetra Tech of Denver, Colorado**



LA BUFA

Gold-Silver Property

Multi-Million Ounce Potential



The La Bufa Property is a large, mid-stage exploration project covering four concessions in the Guadalupe y Calvo mining district in the southwestern portion of the State of Chihuahua, Mexico. La Bufa falls within the Sierra Madre mineral belt, consisting of numerous gold and silver mines including Dolores, Mulatos, Ocampo, Piños Altos, Palmarejo, and El Sauzal.

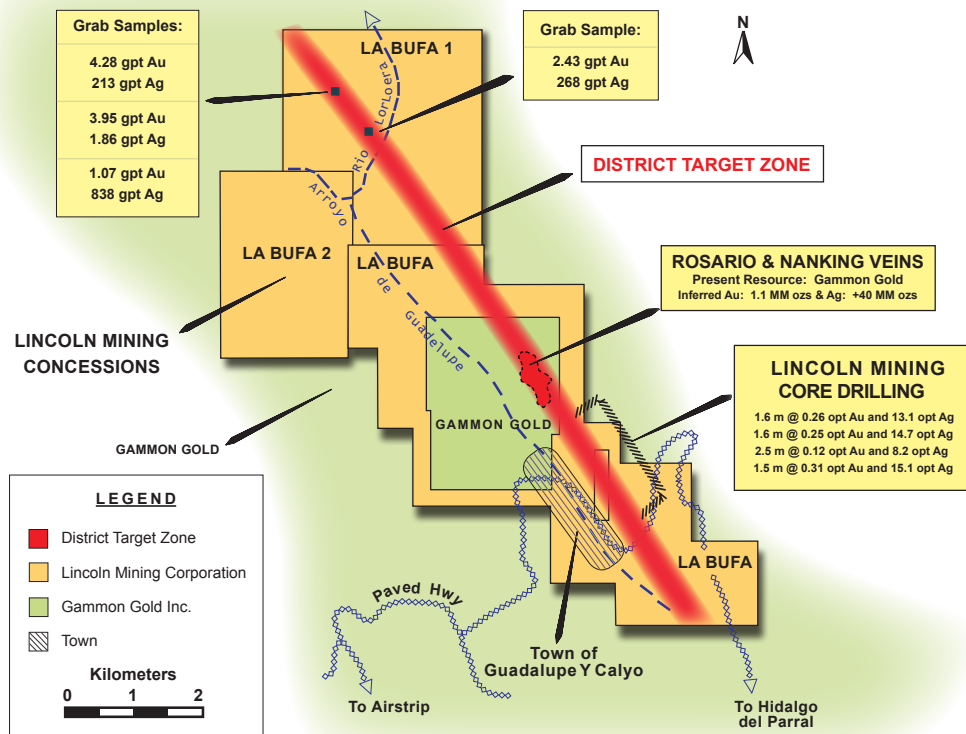
The district has historical production largely from the El Rosario mine, which is controlled by Gammon Gold Inc. Lincoln Mining's land position occupies most of the Guadalupe y Calvo mining district, covering approximately 11 km of the northwest trending mineral trend. The northern portion of the district has received little exploration, but has returned ore-grade assays from various surface samples. Lincoln management believes

that the district, like others in the Sierra Madre Occidental, has multi-million ounce gold-silver potential with the opportunity for a high-grade underground mine. The La Bufa concessions are adjacent to the small town of Guadalupe y Calvo, which has an estimated population of 25,000. The town has electrical power from the national grid and a local airstrip is available for small charter and private aircraft. Logistics are excellent for mining.

In November 2009, Lincoln reached an agreement with Almaden Minerals Inc. to purchase 100% of the La Bufa Property. Under the agreement, Lincoln gained a 100% interest by issuing 6 million shares to Almaden and granting a 2% NSR production royalty. Lincoln has the option to buy down the NSR by 1% within one year after placing the property into production.



Drill program in 2008 & logging core samples.



Historical production in the district extended largely from 1834 to 1939 and came mostly from high-grade epithermal quartz breccia veins at the underground Rosario mine. Past production is estimated at 2 million oz gold and 28 million oz silver, with ore averaging 37 gpt (1.08 opt) Au plus 870 gpt (27 opt) Ag with excellent metallurgy.

Mineralization at La Bufa is classified as typical low-sulfidation, quartz-adularia epithermal gold-silver veins and is similar to numerous other deposits in the Sierra Madre Occidental. Gold-silver mineralization occurs in steeply dipping quartz-breccia veins and stockworks. The mineralized trend strikes northwest in varying intensity. Multiple quartz veins crop out intermittently on the property, ranging in thicknesses from 1 to 3+ meters within a complex fault zone up to 70+ meters wide. Recent geophysical surveys conducted by Lincoln have identified strong targets, as have trenching and surface sampling in the northern portion of the property. New exposures were found of oxidized quartz breccias, box-works with some argentite over 10 m wide and over 900 m long. A second mineralized, northwest-trending zone was also found and measures approximately 15 m wide by 400 m in length and consists of stockwork and breccias that overlie old underground prospects. New surface samples include 1.98, 20.0 and 21.5 gpt gold and 38.8, 164, 180, 193, 434 and 626 gpt silver.

Past drilling by previous operators and core drilling by Lincoln have obtained encouraging results. In 2008, Lincoln drilled 12 angle core holes, which were widely spaced and focused on the El Rosario gold-silver vein system that extends southward onto the La Bufa concession. Encouraging results were received from over 300 meters of vein system strike length, which remains open to the northwest towards the adjacent Rosario mine (approximately 400 meters away).

Project Scope & Plans

In February 2009, the Company filed an amended and restated NI 43-101 technical report on La Bufa, prepared by Richard W. Bybee, dated January 5, 2009. The Company believes potential exists for development of a high-grade underground mine. The Company plans to advance the La Bufa Property with continued exploration to include core drilling and field work in 2010.

PROJECT HIGHLIGHTS

- Mid-stage gold-silver exploration project, well-located on the Sierra Madre mineral belt
- NW-trending target zone over 11 km long controlled mostly by Lincoln Mining
- Historical production and recent exploration indicate potential for a high-grade underground mine
- Potential for multi-million ounce gold-silver deposit
- Continued exploration work is planned for 2010



BOARD OF DIRECTORS

Marc LeBlanc – Independent Director
 Andrew Milligan – Independent Director
 Dr. Michael Price – Independent Director
 Paul Saxton
 Philip Walsh

MANAGEMENT TEAM

Paul Saxton – President & CEO
 Jeffrey Wilson – Executive Vice President
 Micheal Attaway – Chief Operating Officer &
 V.P. Operations
 Emmet McGrath – Chief Financial Officer
 Sabrina Jones – V.P. Corp. Affairs & Secretary
 Vicente Herrera – Corporate Affairs, Mexico

CONTACTS

Paul Saxton
 President & CEO

John Van Duzen
 Investor Communications

Tel: 604-688-7377

Fax: 604-688-7307

E-mail: info@lincolnmining.com

SHARE INFORMATION

(at June 8, 2010)

Exchange – TSX Venture Exchange

Symbol – LMG

Authorized – Unlimited

Outstanding – 82,521,916

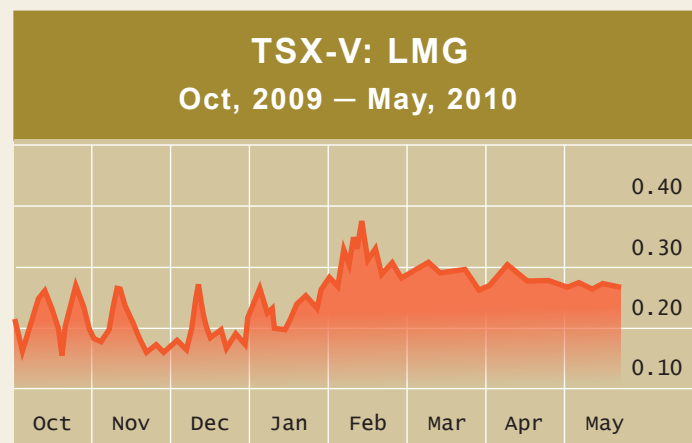
Warrants – 25,170,119

Options – 6,600,000

Fully Diluted – 114,292,035

Market Cap – \$18 million issued

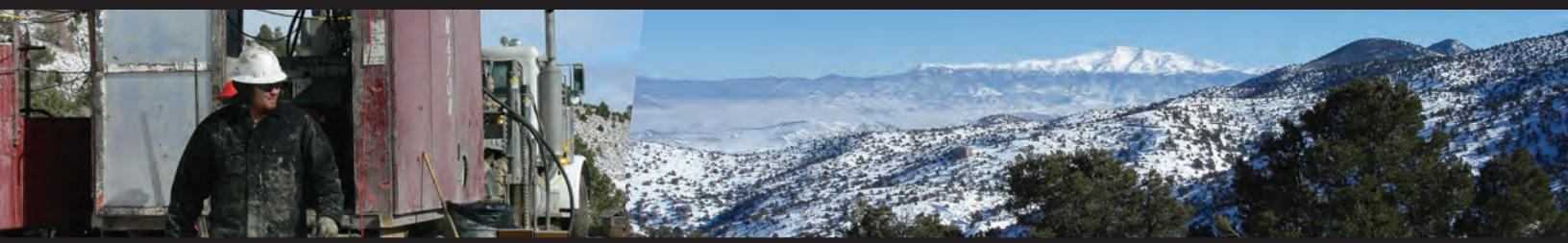
\$25 million fully diluted



52 week high/low: \$0.34 – \$0.17

DISCLAIMER

This document includes forward-looking statements. Statements other than historical fact including the Company's future plans and objectives or expected results, are forward-looking statements and are based on numerous assumptions that involve various risks and uncertainties inherent in the Company's business. Actual results may vary materially from those described in the forward-looking statements. Readers are cautioned to do their due diligence and review filings made by the Company with securities regulation where the risks of investment are outlined in detail. The Company makes all reasonable efforts to update its corporate material, documentation and forward-looking information on a timely basis.



LINCOLN MINING CORPORATION
 Suite 350 - 885 Dunsmuir Street
 Vancouver, B.C. V6C 1N5

Tel: 604-688-7377 Fax: 604-688-7307 Web: www.lincolnmining.com